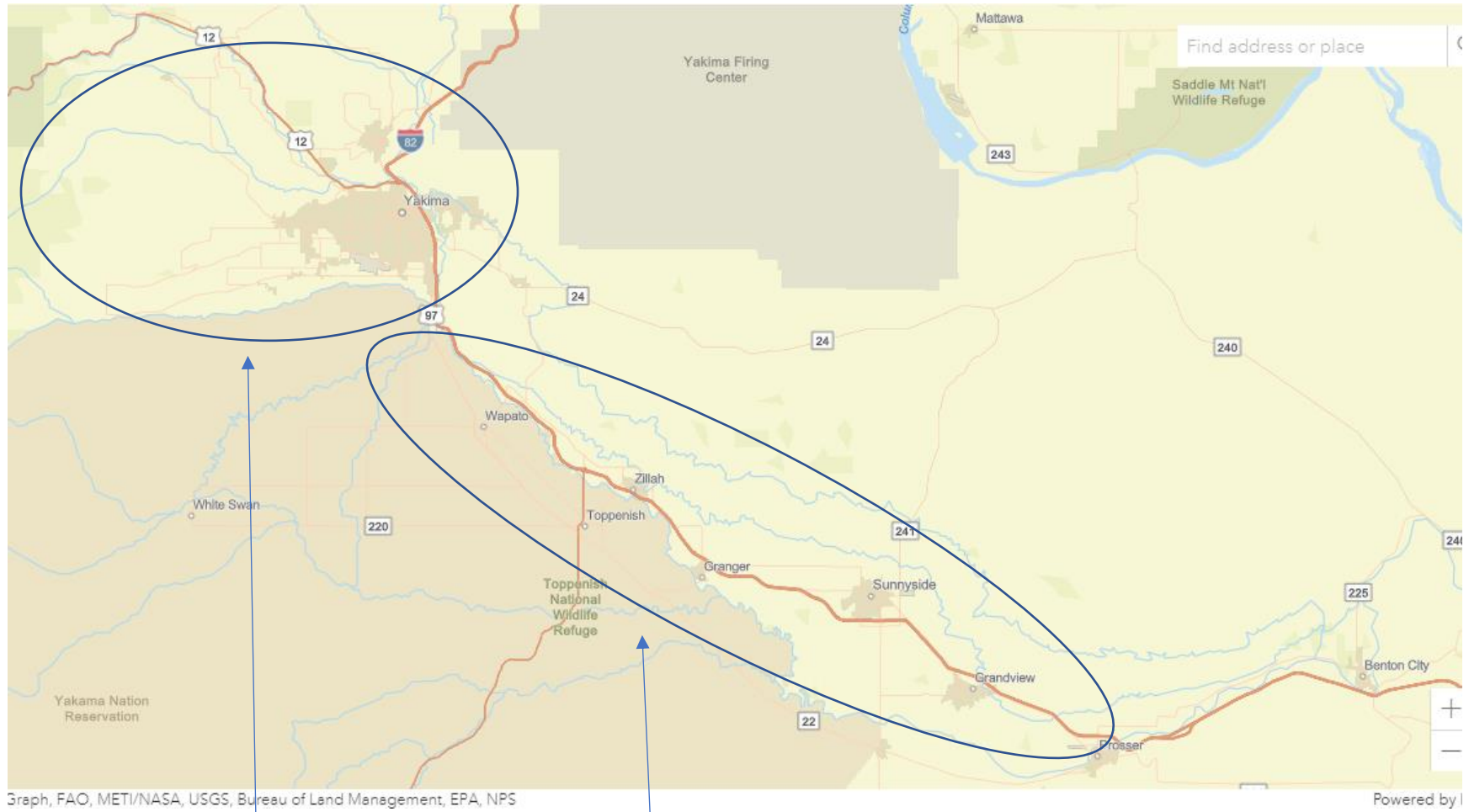


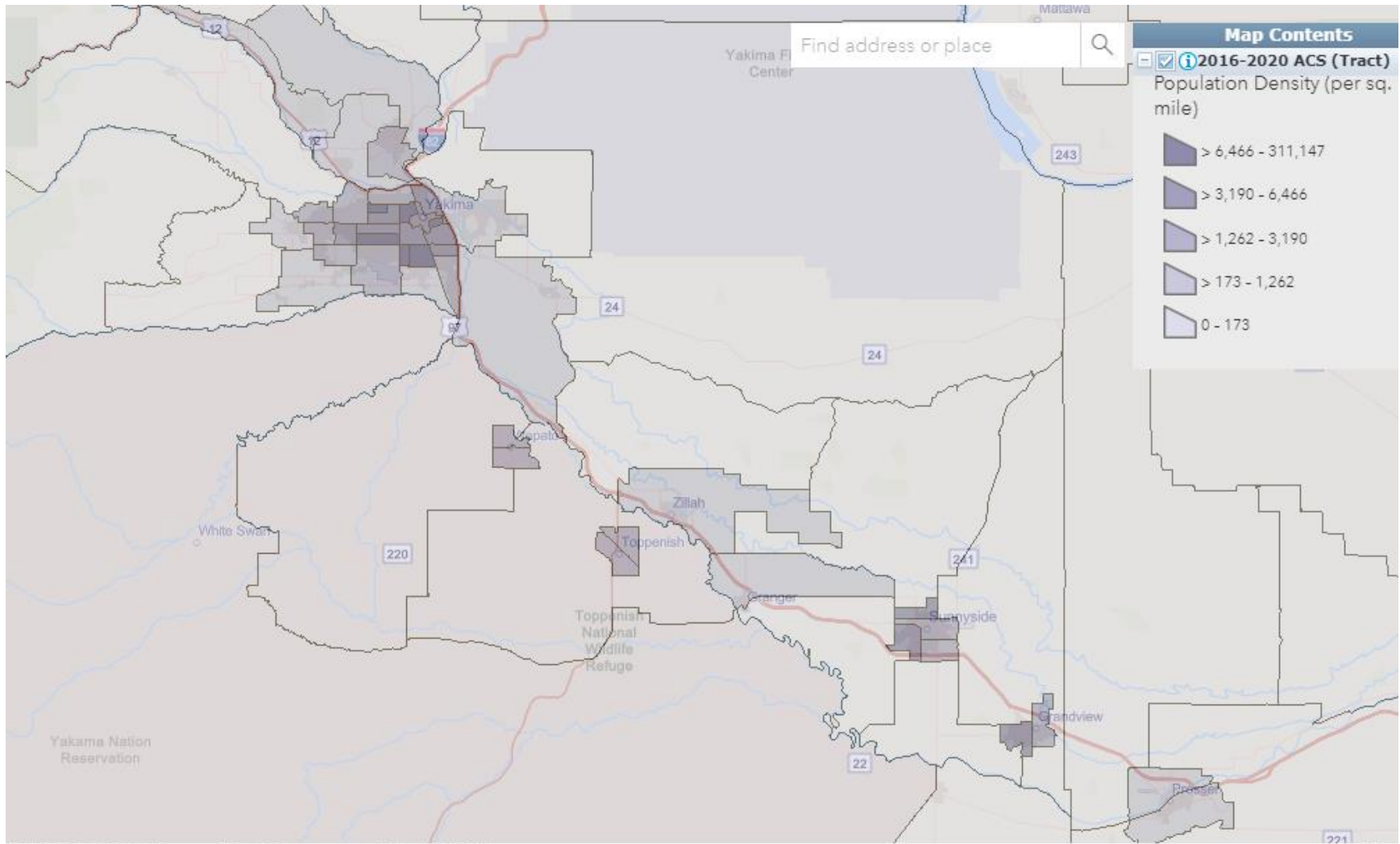
Screen Shots from the EPA EJScreen showing differences in demographics and air quality between the LYV and the UYV.



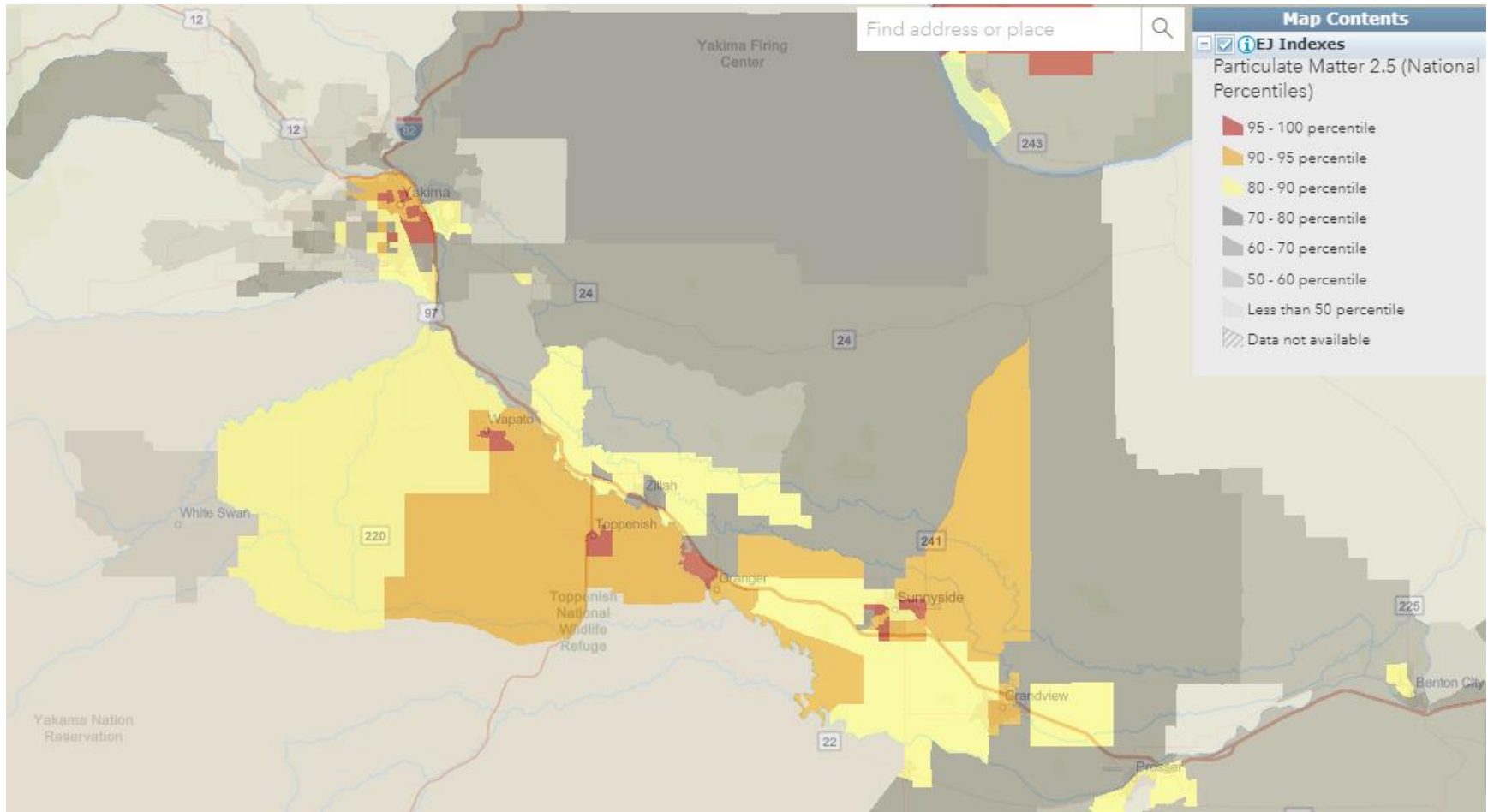
Upper Yakima Valley (UYV)

Lower Yakima Valley (LYV)

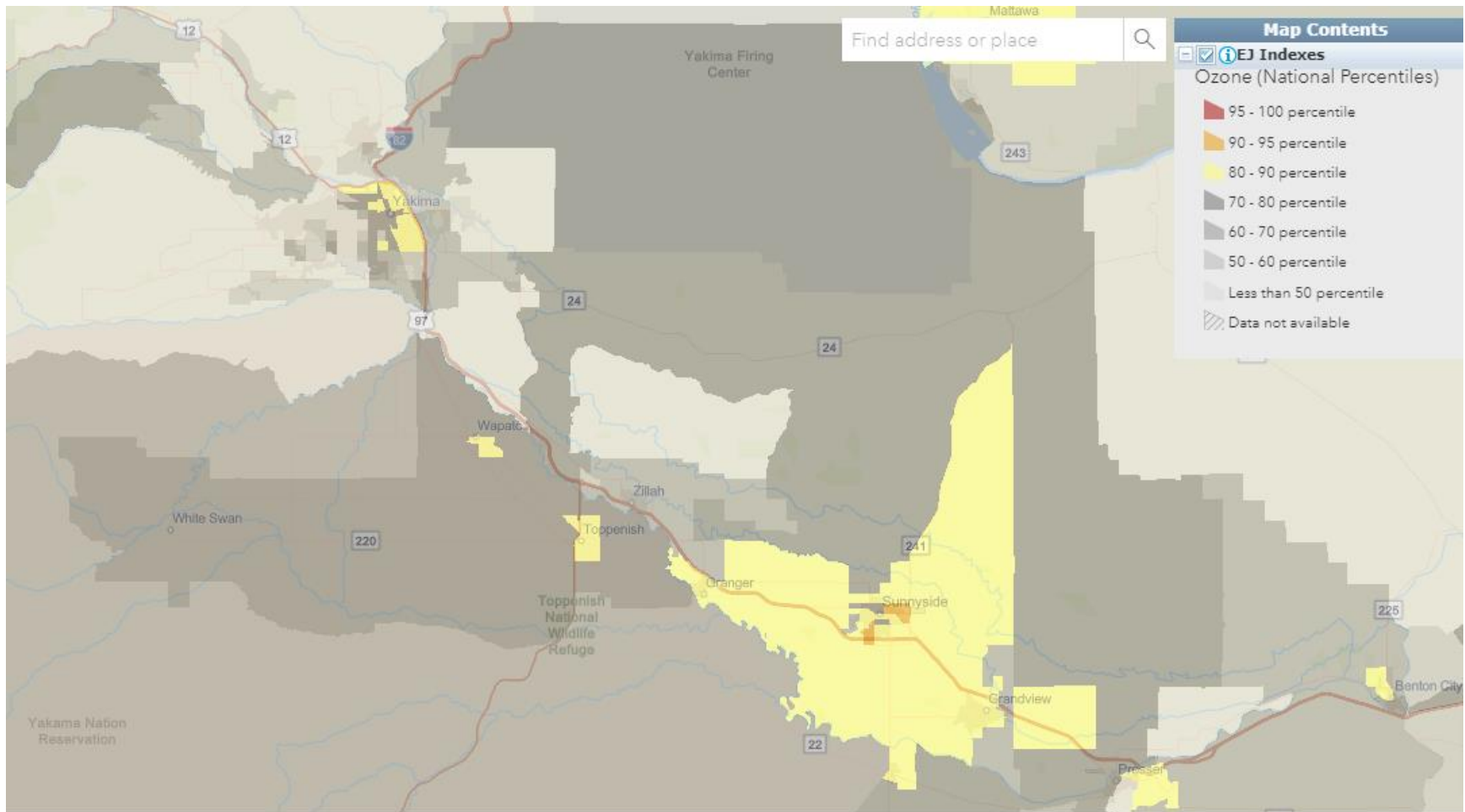
# Population Density



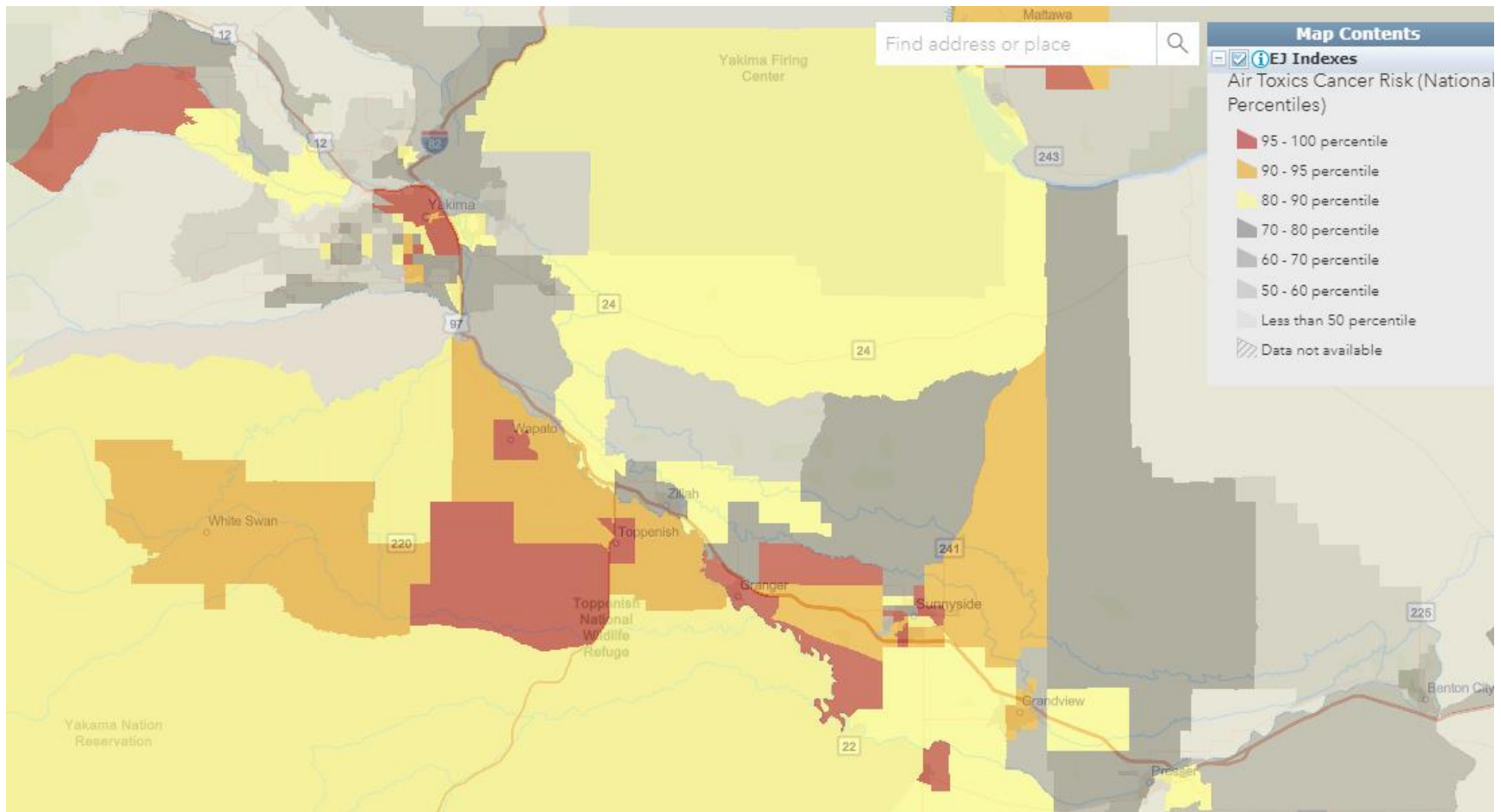
# PM 2.5



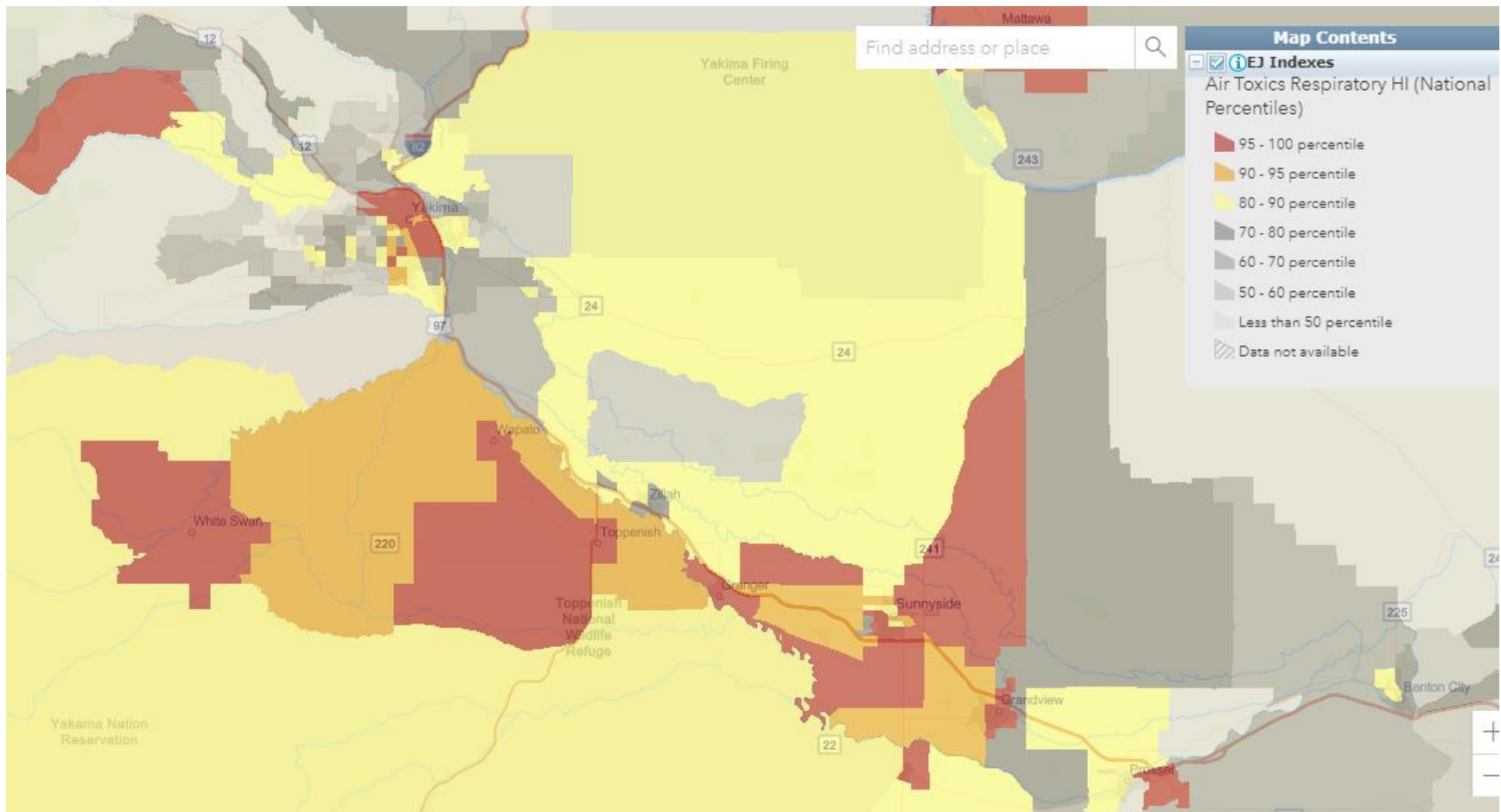
# Ozone



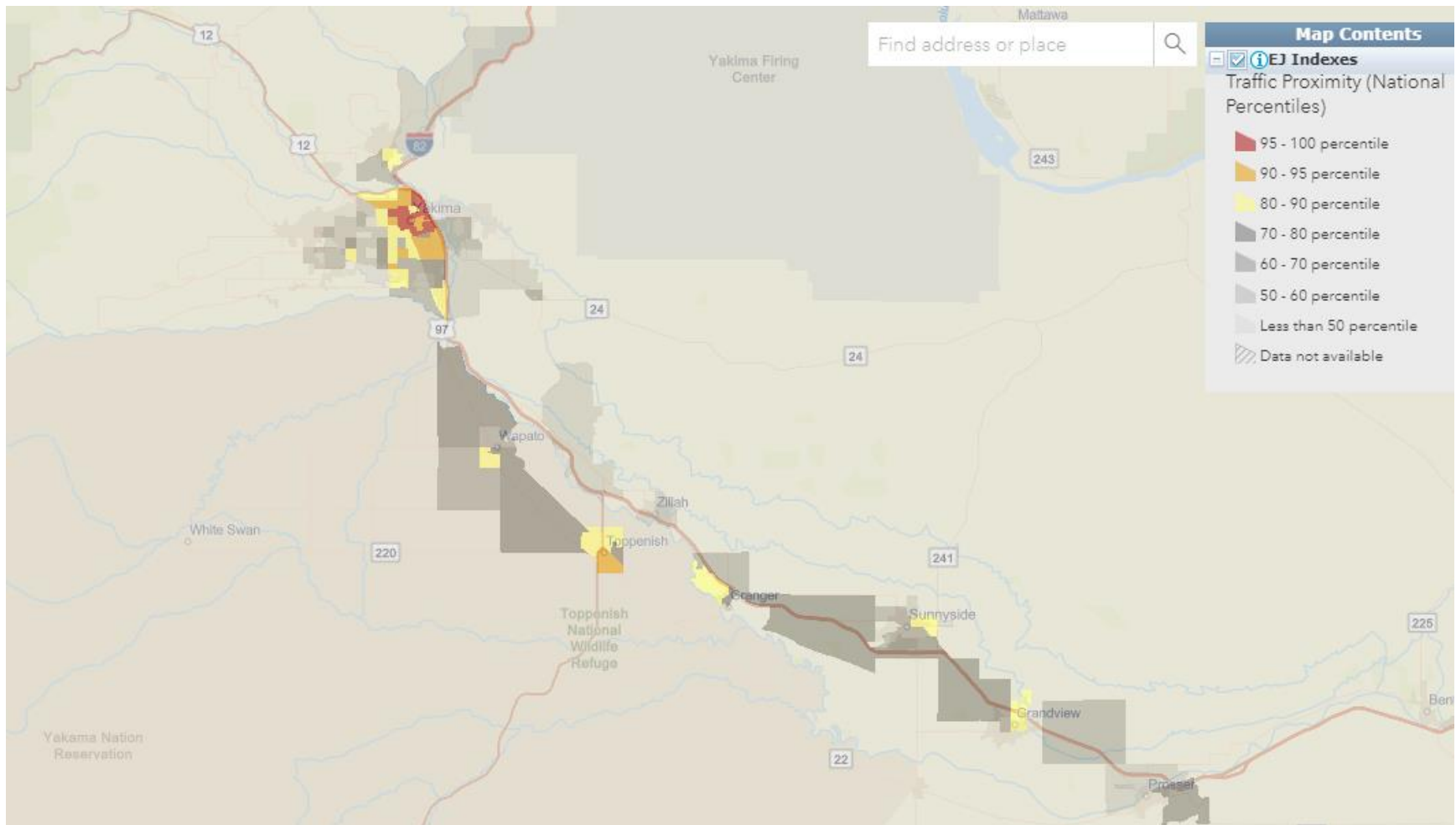
# Air Toxics Cancer Risk



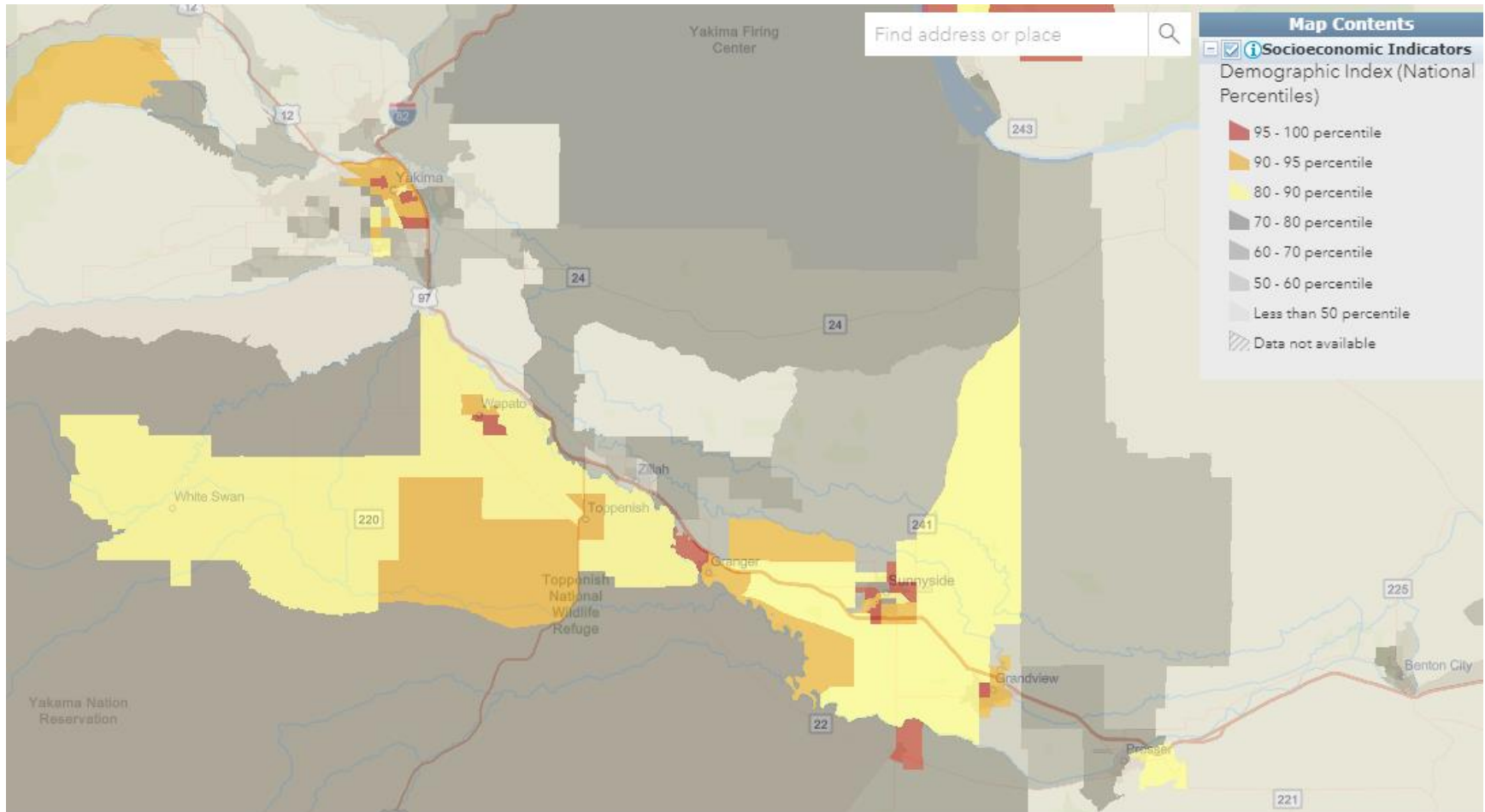
# Air Toxics Respiratory



# Traffic Proximity

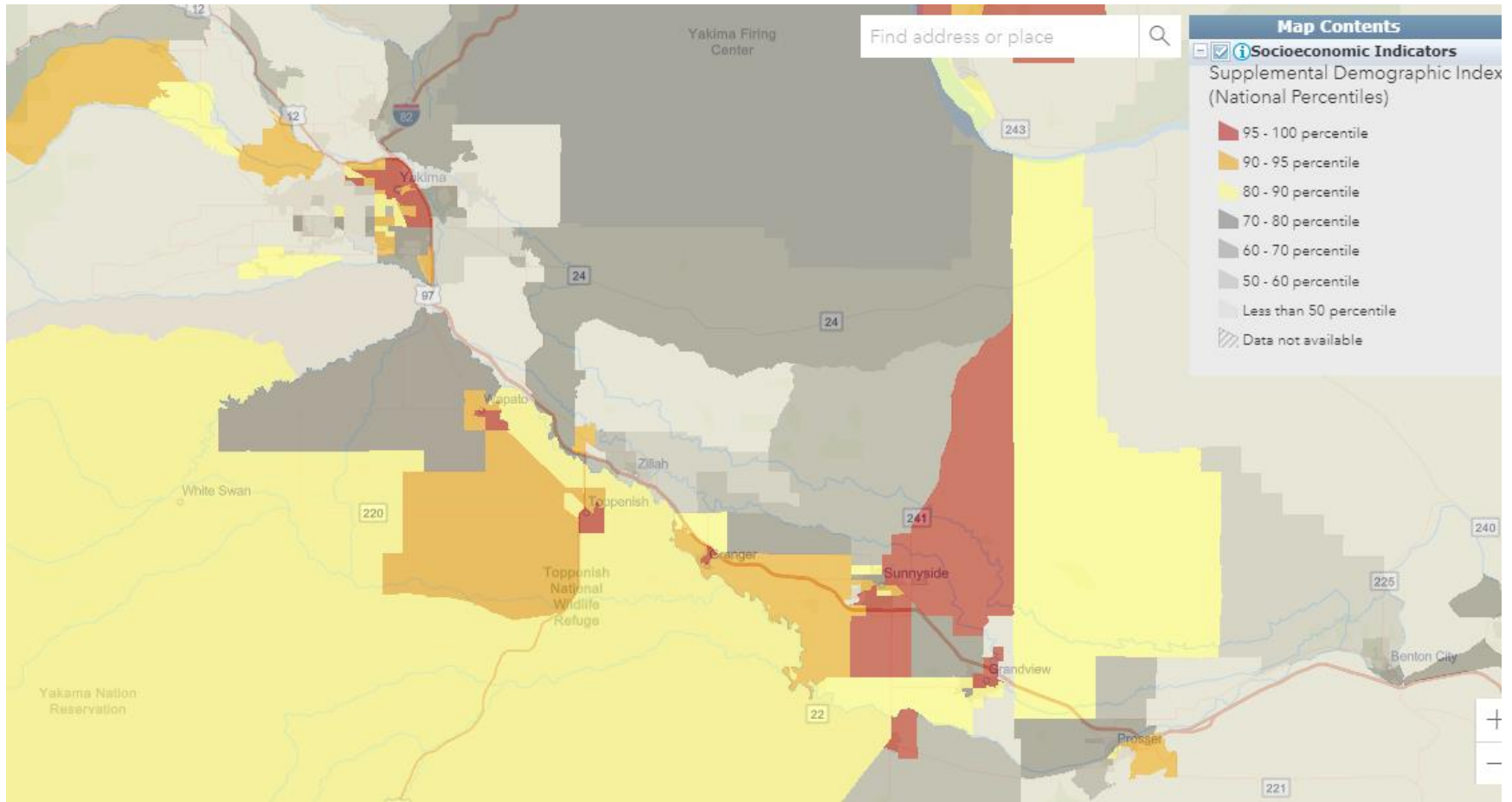


## Demographic Index – EJ Communities

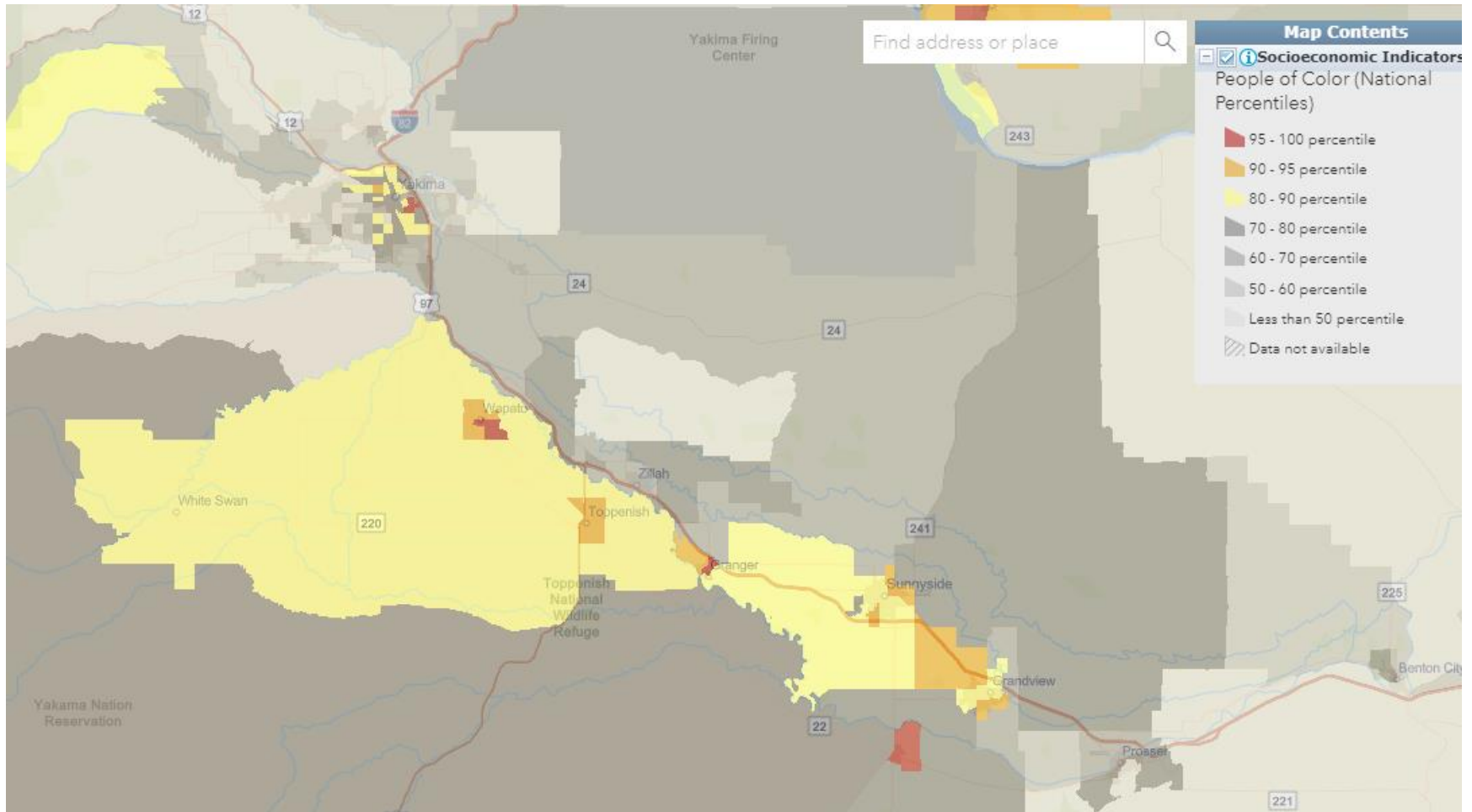




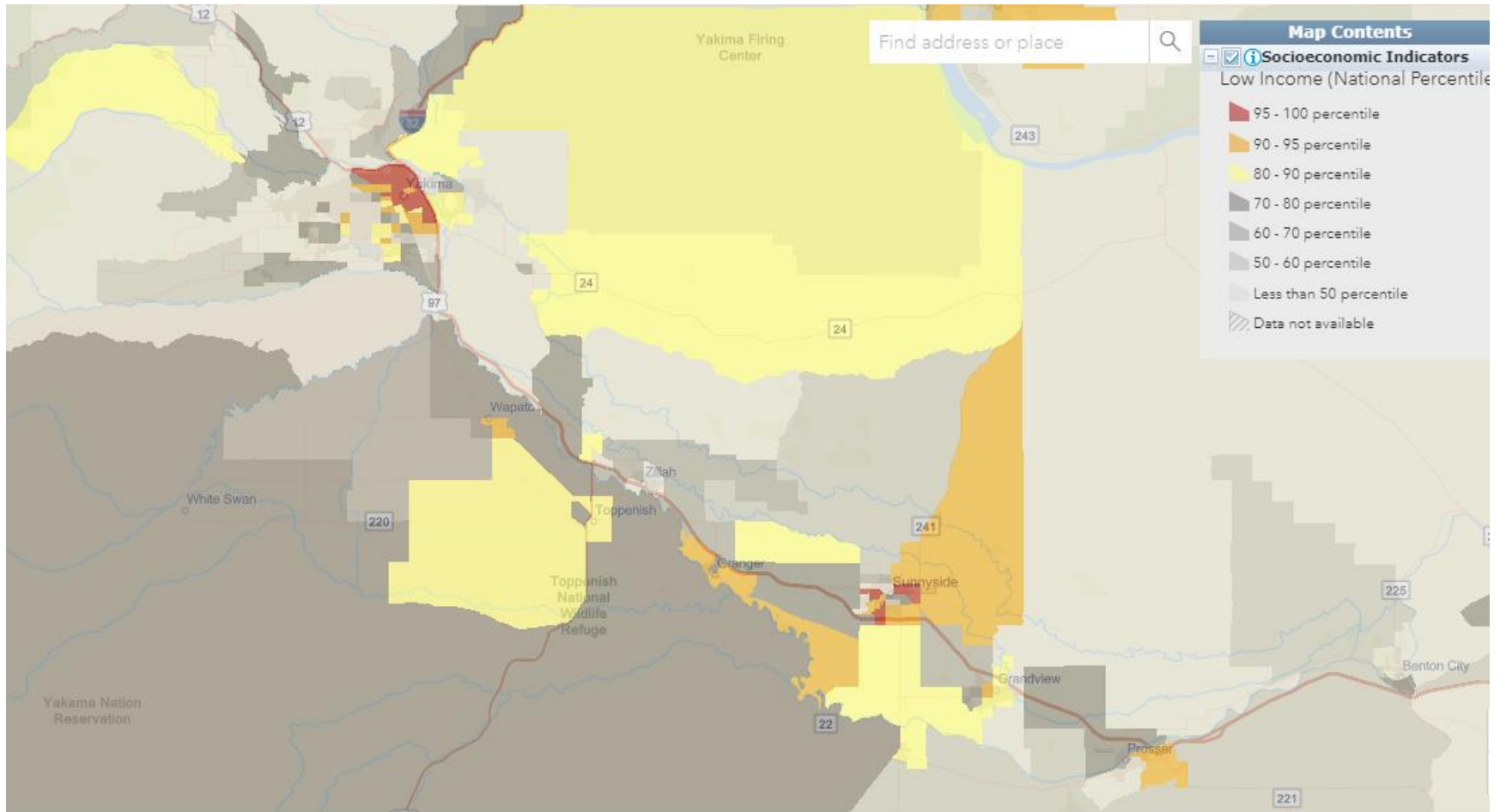
## Supplemental Demographic Index



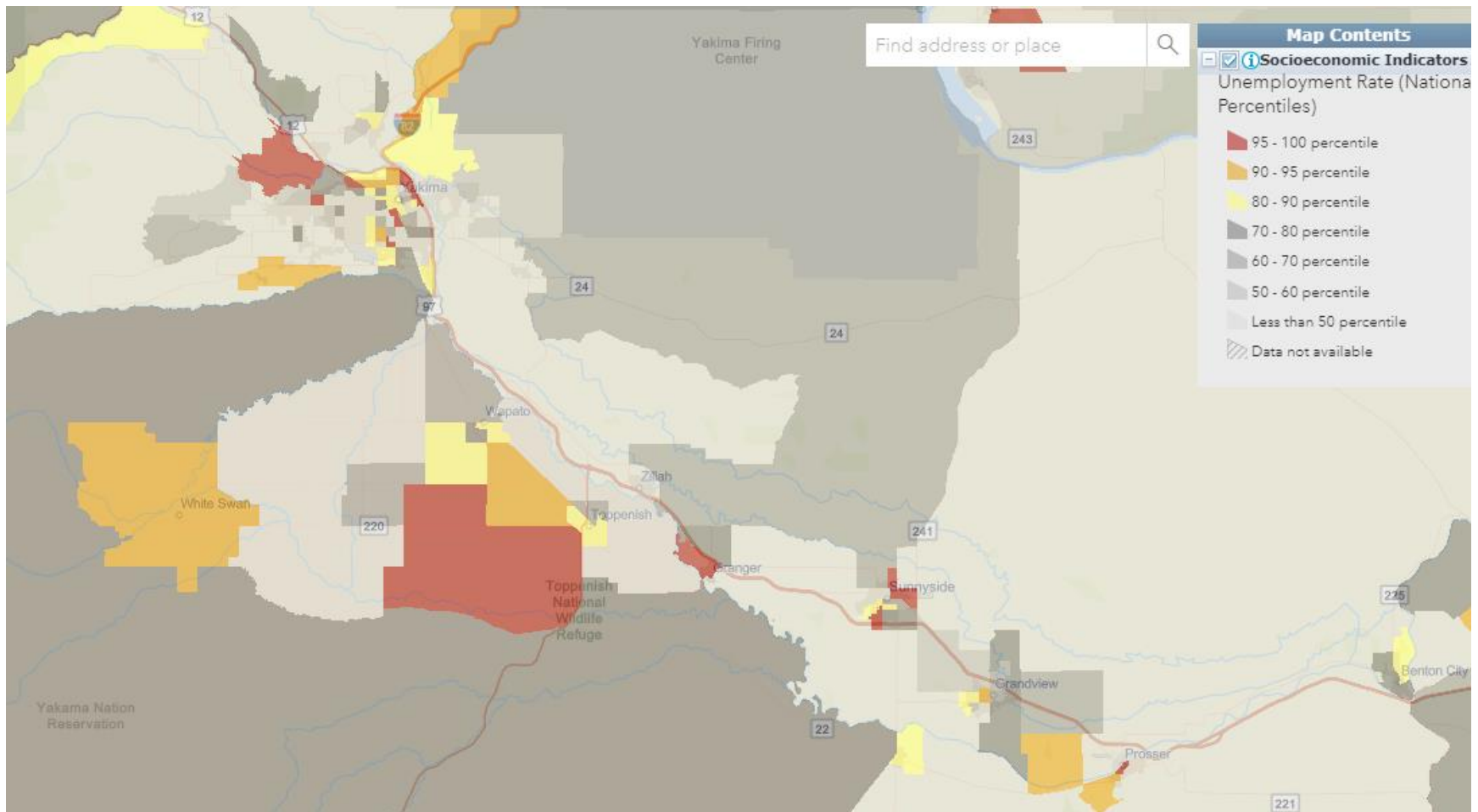
# People of Color



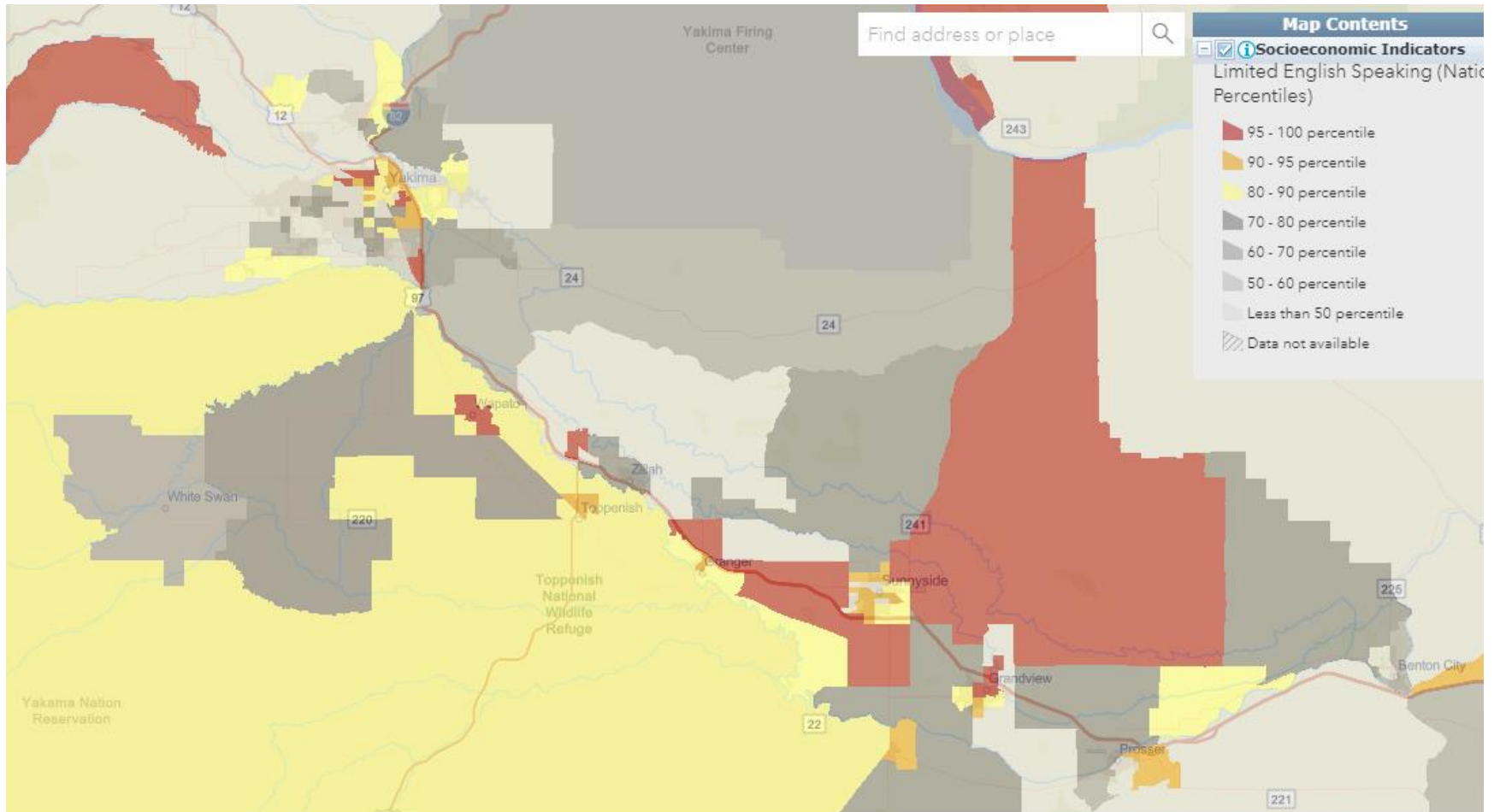
# Low Income



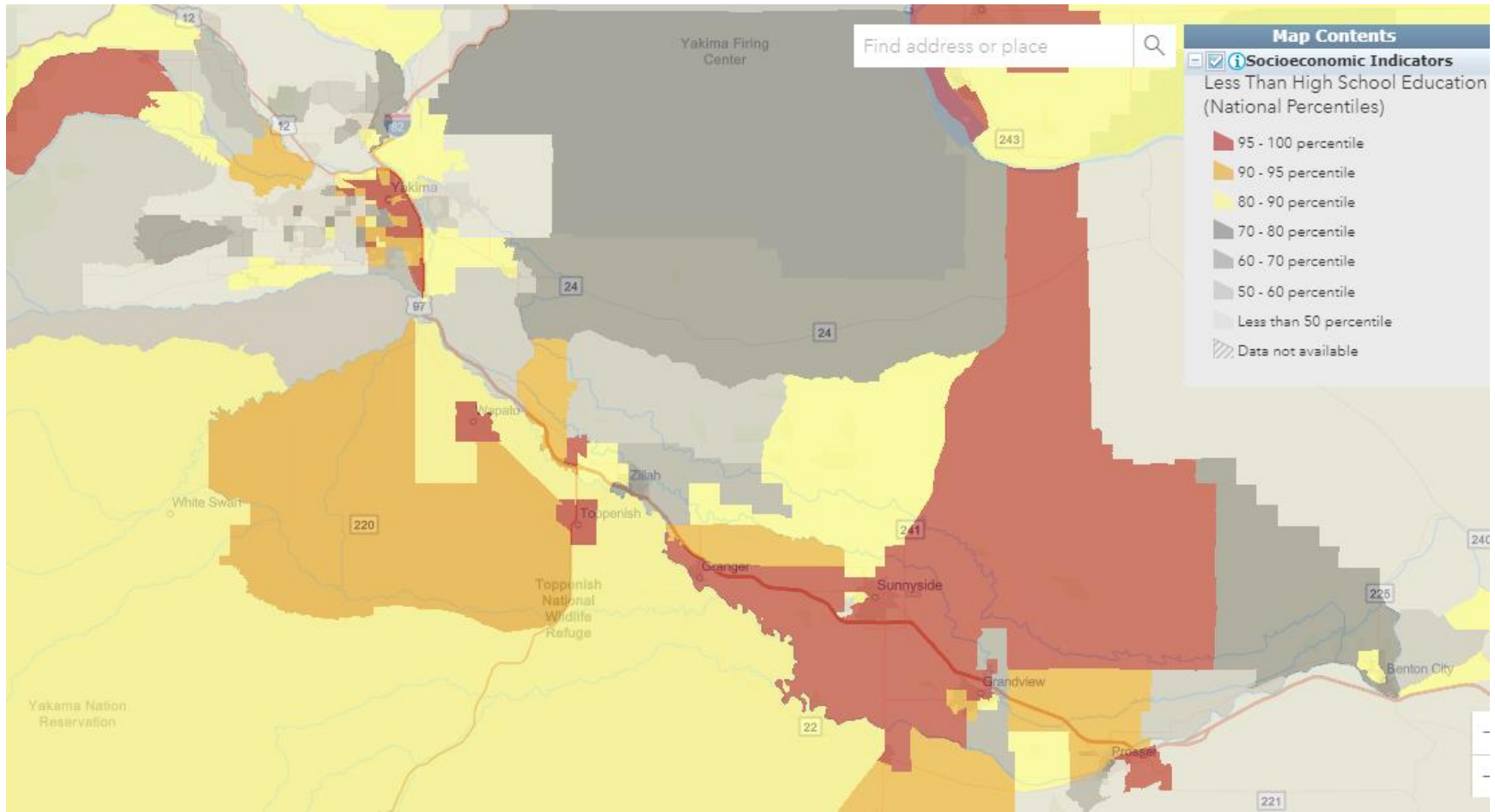
# Unemployment Rate



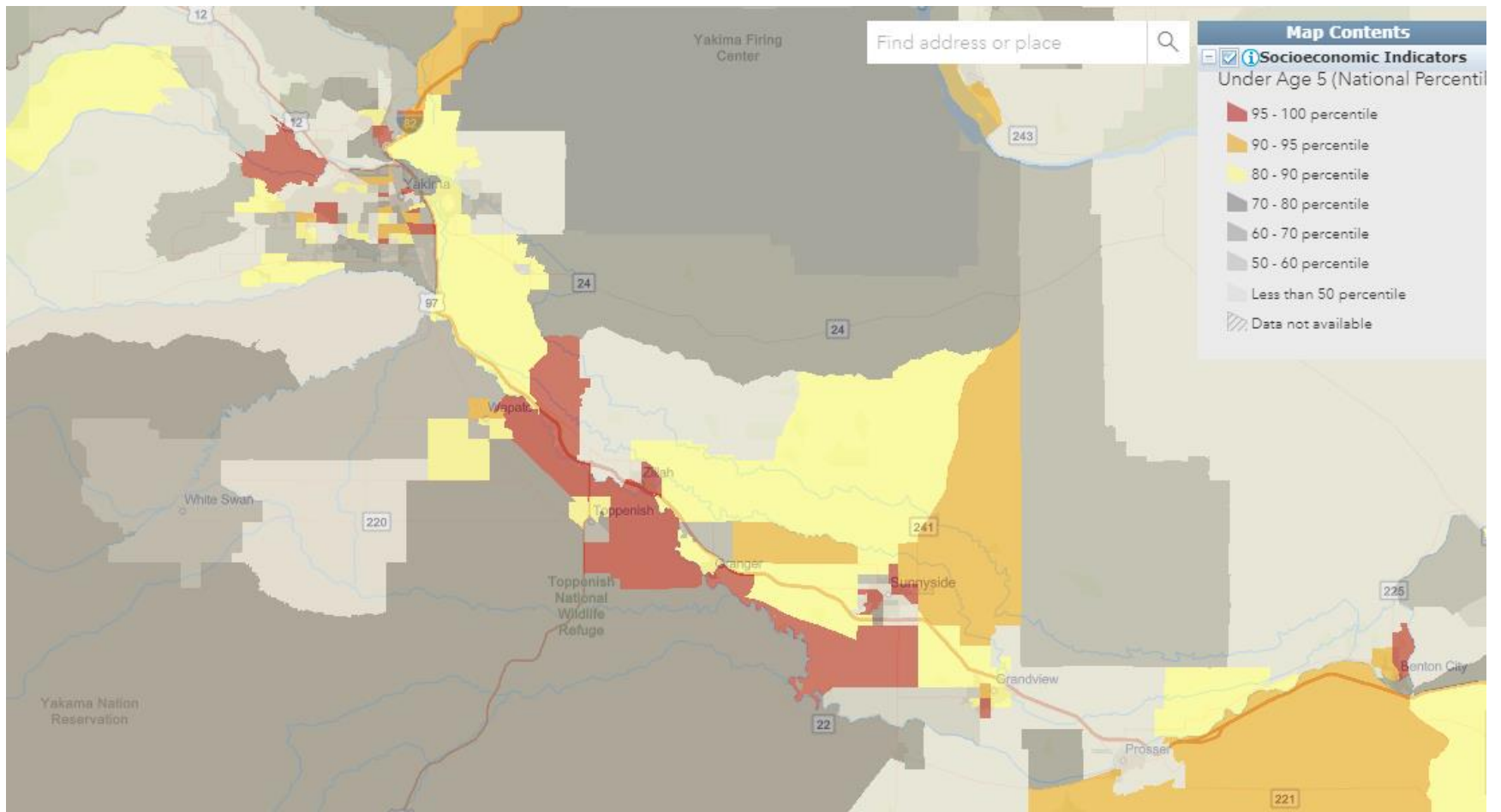
# Limited English Speaking



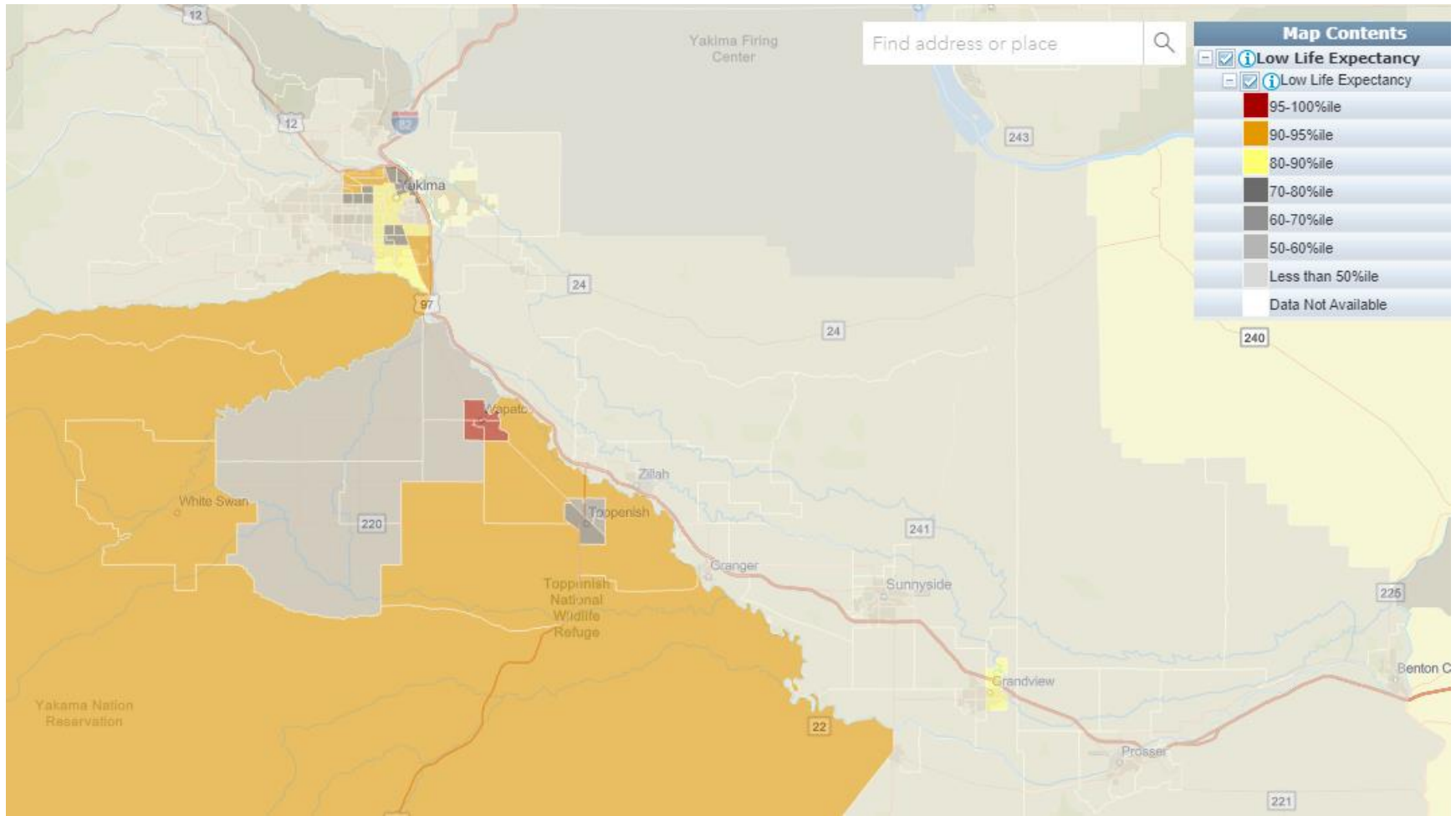
# Less Than High School Education



## Under Age 5

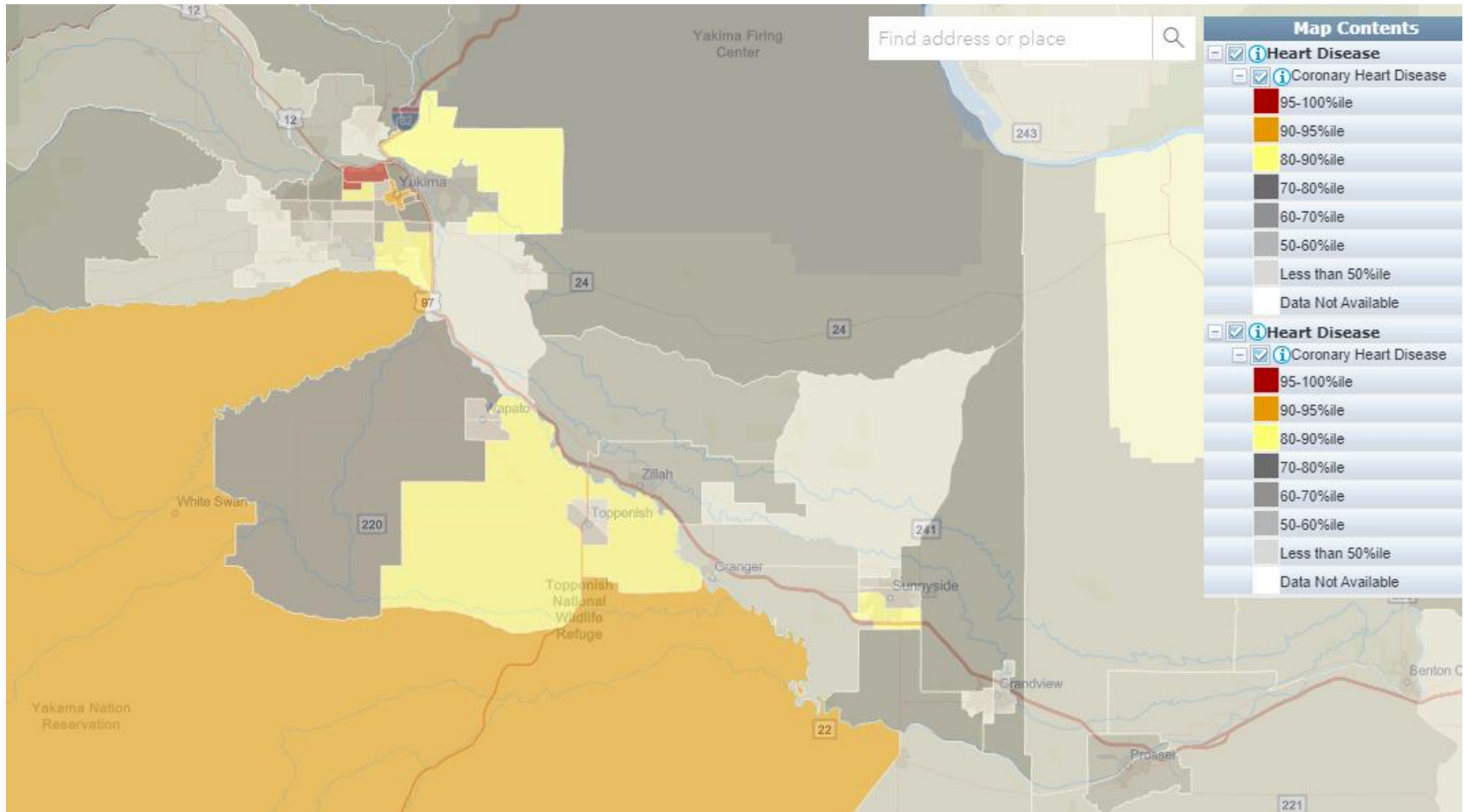


# Low Life Expectancy

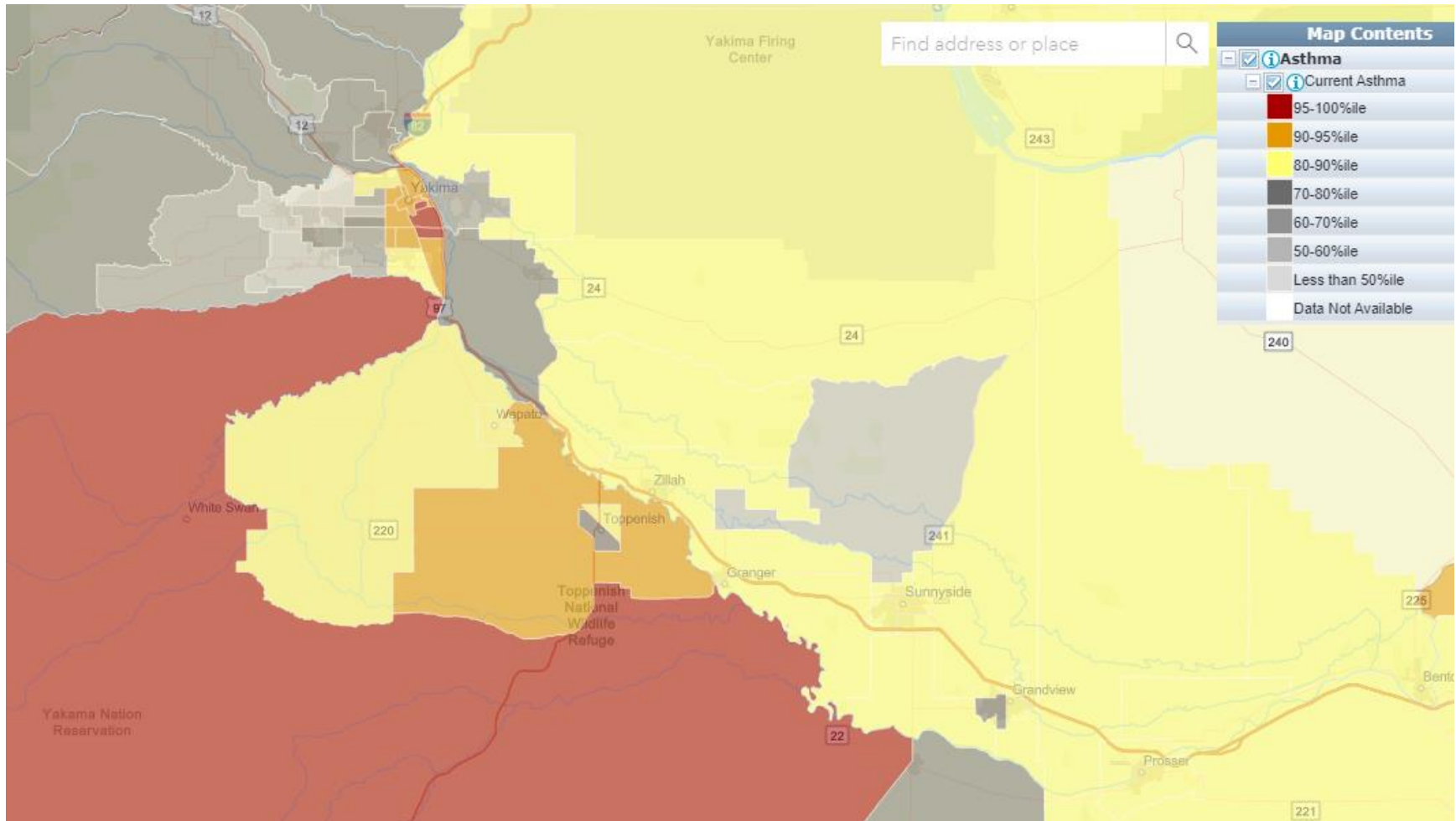




# Heart Disease



# Asthma



# Food Desserts

