

EPA Air Quality Monitors Report – FRM & FEM Monitors

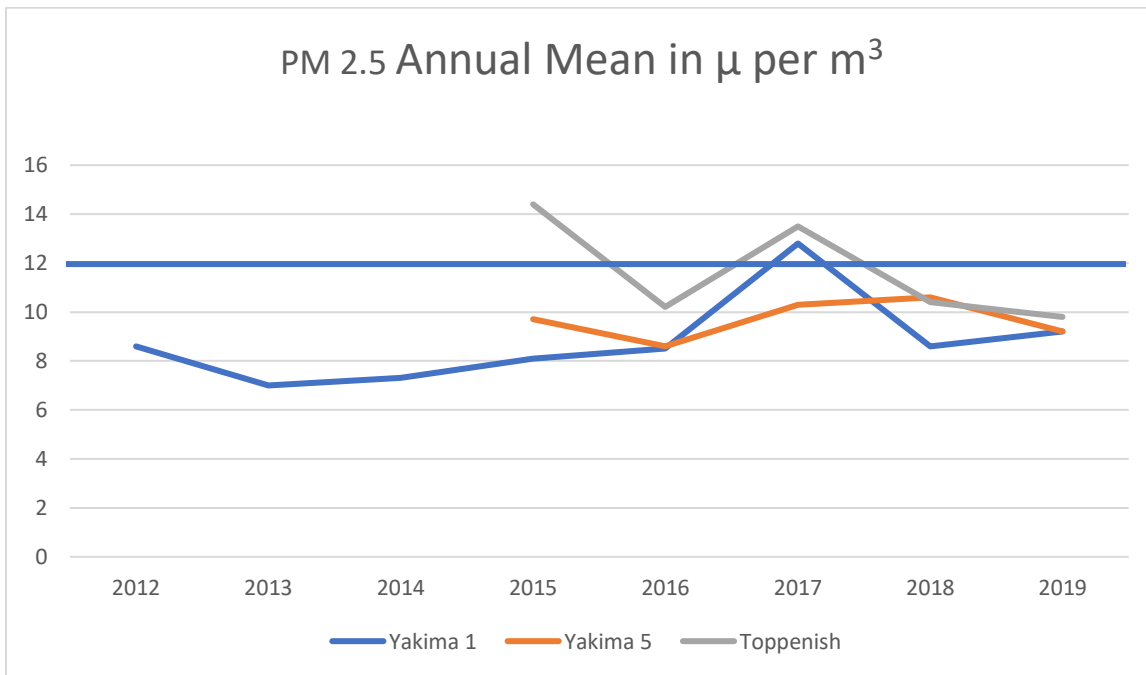
PM 2.5 for Yakima County – Excludes Exceptional Events

Available at <https://www.epa.gov/outdoor-air-quality-data/monitor-values-report>

Annual Mean in μ per m^3

Year	402 S. 40 th Ave, Yakima (1)	402 S. 40 th Ave, Yakima (3)	402 S. 40 th Ave, Yakima (5)	141 Ward Rd, Toppenish (1)	141 Ward Rd, Toppenish (5)
2012	8.6				
2013	7.0*	17.2*			
2014	7.3	8.6*			
2015	8.1*	8.9*	9.7*	14.4*	
2016	8.5		8.6	10.2*	9.7*
2017	12.8		10.3		13.5
2018	8.6*		10.6		10.4*
2019	9.2		9.2		9.8
2020	11.6*	12.3*			14.1*
2021	14.6*	9.0*			8.3*

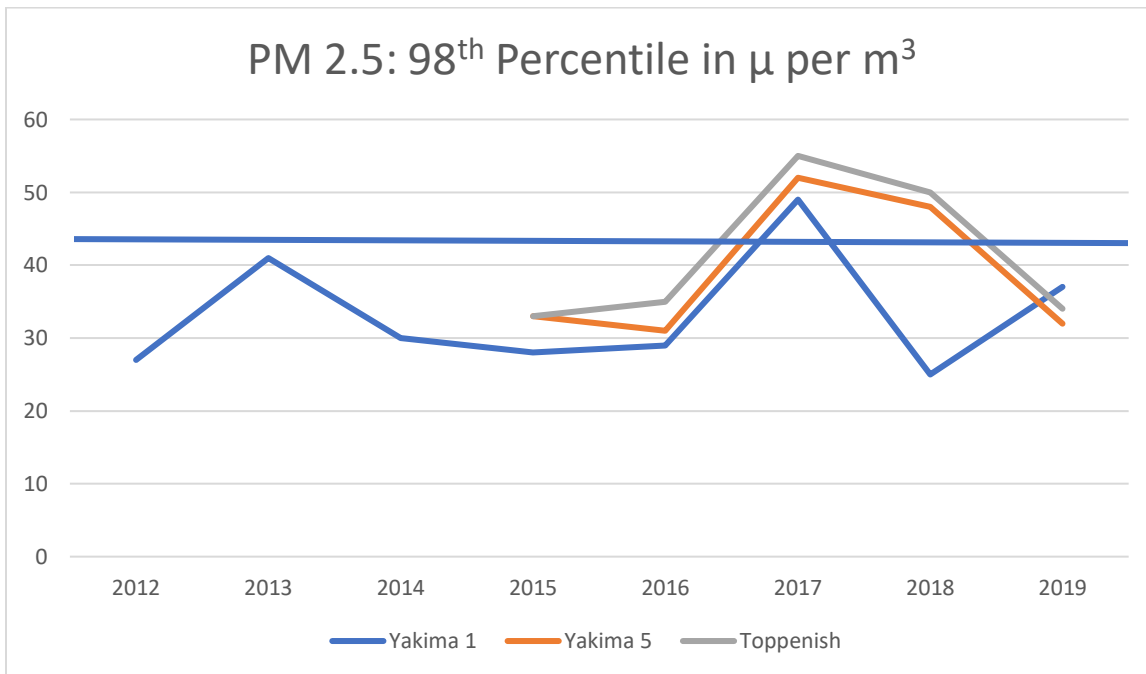
- Indicates insufficient data.
2020 & 2021 may include data from excluded events.



EPA cutoff for compliance = 12 μ per m^3 .

98th Percentile in μ per m^3

Year	402 S. 40 th Ave, Yakima (1)	402 S. 40 th Ave, Yakima (3)	402 S. 40 th Ave, Yakima (5)	141 Ward Rd, Toppenish (1)	141 Ward Rd, Toppenish (5)
2012	27				
2013	41	38			
2014	30	27			
2015	28	25	33	33	
2016	29		31	62	35
2017	49		52		55
2018	25		48		50
2019	37		32		34
2020	135		105		90
2021	30		29		28



EPA cutoff for compliance = 35 μ per m^3 .

First Max in μ per m^3

Year	402 S. 40 th Ave, Yakima (1)	402 S. 40 th Ave, Yakima (3)	402 S. 40 th Ave, Yakima (5)	141 Ward Rd, Toppenish (1)	141 Ward Rd, Toppenish (5)
2012	29.2				
2013	50.1	51.5			
2014	41	44.6			
2015	39.3	28.9	41	32.6	
2016	49.6		63.9	61.8	49.5
2017	161.3		184.6		184
2018	44		132		137.5
2019	39.2		40.8		39.8
2020	250.2	325.4			447.6
2021	30.2	30.6			29.8

Second Max in μ per m^3

Year	402 S. 40 th Ave, Yakima (1)	402 S. 40 th Ave, Yakima (3)	402 S. 40 th Ave, Yakima (5)	141 Ward Rd, Toppenish (1)	141 Ward Rd, Toppenish (5)
2012	26.9				
2013	42.3	43.9			
2014	33.2	40.8			
2015	31.3	25.8	34.8	24.7	
2016	30.9		59.2	29	42.9
2017	76.1		173.3		183.6
2018	31.8		102		124.5
2019	36.8		38.8		37.6
2020	134.5		273.9		378.2
2021	23.5		29.1		27.9

Third Max in μ per m^3

Year	402 S. 40 th Ave, Yakima (1)	402 S. 40 th Ave, Yakima (3)	402 S. 40 th Ave, Yakima (5)	141 Ward Rd, Toppenish (1)	141 Ward Rd, Toppenish (5)
2012	25.9				
2013	37	42.8			
2014	30.2	39.2			
2015	27.7	25.5	33.1	23.5	
2016	29.1		53.5	24.3	35
2017	49.2		166.4		174.1
2018	25.2		59.7		57.4
2019	36.8		37.3		37.1
2020	72.1		254.3		328.2
2021	20.8		25.7		26.9

Fourth Max in μ per m^3

Year	402 S. 40 th Ave, Yakima (1)	402 S. 40 th Ave, Yakima (3)	402 S. 40 th Ave, Yakima (5)	141 Ward Rd, Toppenish (1)	141 Ward Rd, Toppenish (5)
2012	26.2				
2013	23.7	39.5			
2014	29.2	36.5			
2015	25.1	25.1	32.3	21.9	
2016	26.8		50.2	23.6	31.2
2017	48		84.5		100.3
2018	24.1		59.1		56.1
2019	37		32		36.7
2020	42.7		144.1		304.9
2021	19.6		23.5		21

Note: It is likely that the data for 2020 & 2021 includes exceptional events. Therefore, that data was separated from the previous years for graphing purposes.

Data Copied from <https://www.epa.gov/outdoor-air-quality-data/monitor-values-report>

2012

Obs	First Max	Second Max	Third Max	Fourth Max	98th Percentile	Weighted Annual Mean	Exc Events	Monitor Number	Site ID	Address	City
105	29.2	26.9	26.9	26.2	27	8.6*	Excluded	1	530770009	402 South 4th Ave	Yakima

2013

Obs	First Max	Second Max	Third Max	Fourth Max	98th Percentile	Weighted Annual Mean	Exc Events	Monitor Number	Site ID	Address	City
76	50.1	41.3	37	23.7	41	7.0*	None	1	530770009	402 South 4th Ave	Yakima
85	51.5	43.9	42.8	39.5	38	17.2*	Excluded	3	530770009	402 South 4th Ave	Yakima

2014

Obs	First Max	Second Max	Third Max	Fourth Max	98th Percentile	Weighted Annual Mean	Exc Events	Monitor Number	Site ID	Address	City
113	41	33.2	30.2	29.2	30	7.3	None	1	530770009	402 South 4th Ave	Yakima
332	44.6	40.8	39.2	36.5	27	8.6*	None	3	530770009	402 South 4th Ave	Yakima

2015

Obs	First Max	Second Max	Third Max	Fourth Max	98th Percentile	Weighted Annual Mean	Exc Events	Monitor Number	Site ID	Address	City
25	26.5	24.5	24.2	18.6	27	9.7*	None	1	530770005	810 16thst (Harrison Middle School)	Sunnyside
108	39.3	31.3	27.7	25.1	28	8.1*	Excluded	1	530770009	402 South 4th Ave	Yakima
231	28.9	25.8	25.5	25.1	25	8.9*	Excluded	3	530770009	402 South 4th Ave	Yakima
101	41	34.8	33.1	32.3	33	9.7*	None	5	530770009	402 South 4th Ave	Yakima
13	32.6	24.7	23.5	21.9	33	14.4*	None	1	530770015	141 Ward Rd., Toppenish, Wa	Toppenish

2016

Obs	First Max	Second Max	Third Max	Fourth Max	98th Percentile	Weighted Annual Mean	Exc Events	Monitor Number	Site ID	Address	City
21	26.1	21.7	19.9	18.3	26	12.1*	None	1	530770005	810 16thst (Harrison Middle School)	Sunnyside
116	49.6	30.9	29.1	26.6	29	8.5	None	1	530770009	402 South 4th Ave	Yakima
349	63.9	59.2	53.5	50.2	31	8.6	None	5	530770009	402 South 4th Ave	Yakima
47	61.8	29	24.3	23.6	62	10.2*	None	1	530770015	141 Ward Rd., Toppenish, Wa	Toppenish
149	49.5	47.9	35	31.2	35	9.7*	None	5	530770015	141 Ward Rd., Toppenish, Wa	Toppenish

2017

Obs	First Max	Second Max	Third Max	Fourth Max	98th Percentile	Weighted Annual Mean	Exc Events	Monitor Number	Site ID	Address	City
113	161.3	76.1	49.2	48	49	12.8	None	1	530770009	402 South 4th Ave	Yakima
356	184.6	173.3	166.4	84.5	52	10.3	None	5	530770009	402 South 4th Ave	Yakima
352	184	183.6	174.1	100.3	55	13.5	None	5	530770015	141 Ward Rd., Toppenish, Wa	Toppenish

2018

Obs	First Max	Second Max	Third Max	Fourth Max	98th Percentile	Weighted Annual Mean	Exc Events	Monitor Number	Site ID	Address	City
102	44	31.8	25.2	24.1	25	8.6*	None	1	530770009	402 South 4th Ave	Yakima
360	132	102	59.7	59.1	48	10.6	None	5	530770009	402 South 4th Ave	Yakima
307	137.5	124.5	57.4	56.1	50	10.4*	None	5	530770015	141 Ward Rd., Toppenish, Wa	Toppenish

2019

Obs	First Max	Second Max	Third Max	Fourth Max	98th Percentile	Weighted Annual Mean	Exc Events	Monitor Number	Site ID	Address	City
113	39.2	36.8	36.8	35	37	9.2	None	1	530770009	402 South 4th Ave	Yakima
353	40.8	38.8	37.3	35.1	32	9.2	None	5	530770009	402 South 4th Ave	Yakima
322	39.8	37.6	37.1	36.7	34	9.8	None	5	530770015	141 Ward Rd., Toppenish, Wa	Toppenish

2020

Obs	First Max	Second Max	Third Max	Fourth Max	98th Percentile	Weighted Annual Mean	Exc Events	Monitor Number	Site ID	Address	City
75	250.2	134.5	72.1	42.7	135	11.6*	None	1	530770009	402 South 4th Ave	Yakima
315	325.4	273.9	254.3	144.1	105	12.3*	None	5	530770009	402 South 4th Ave	Yakima
306	447.6	378.2	328.2	304.9	90	14.1*	None	5	530770015	141 Ward Rd., Toppenish, Wa	Toppenish

2021

Obs	First Max	Second Max	Third Max	Fourth Max	98th Percentile	Weighted Annual Mean	Exc Events	Monitor Number	Site ID	Address	City
11	30.2	25.5	20.8	19.6	30	14.6*	None	1	530770009	402 South 4th Ave	Yakima
90	30.6	29.1	25.7	23.5	29	9.0*	None	5	530770009	402 South 4th Ave	Yakima
73	29.8	27.9	26.9	21	28	8.3*	None	5	530770015	141 Ward Rd., Toppenish, Wa	Toppenish